

Coal River Basin Coal Waste Impoundments

WVDEP has sited many impoundments for chronic violations including Brushy Fork, Elk Run, and the Omar Mining sites in the Coal River Basin.

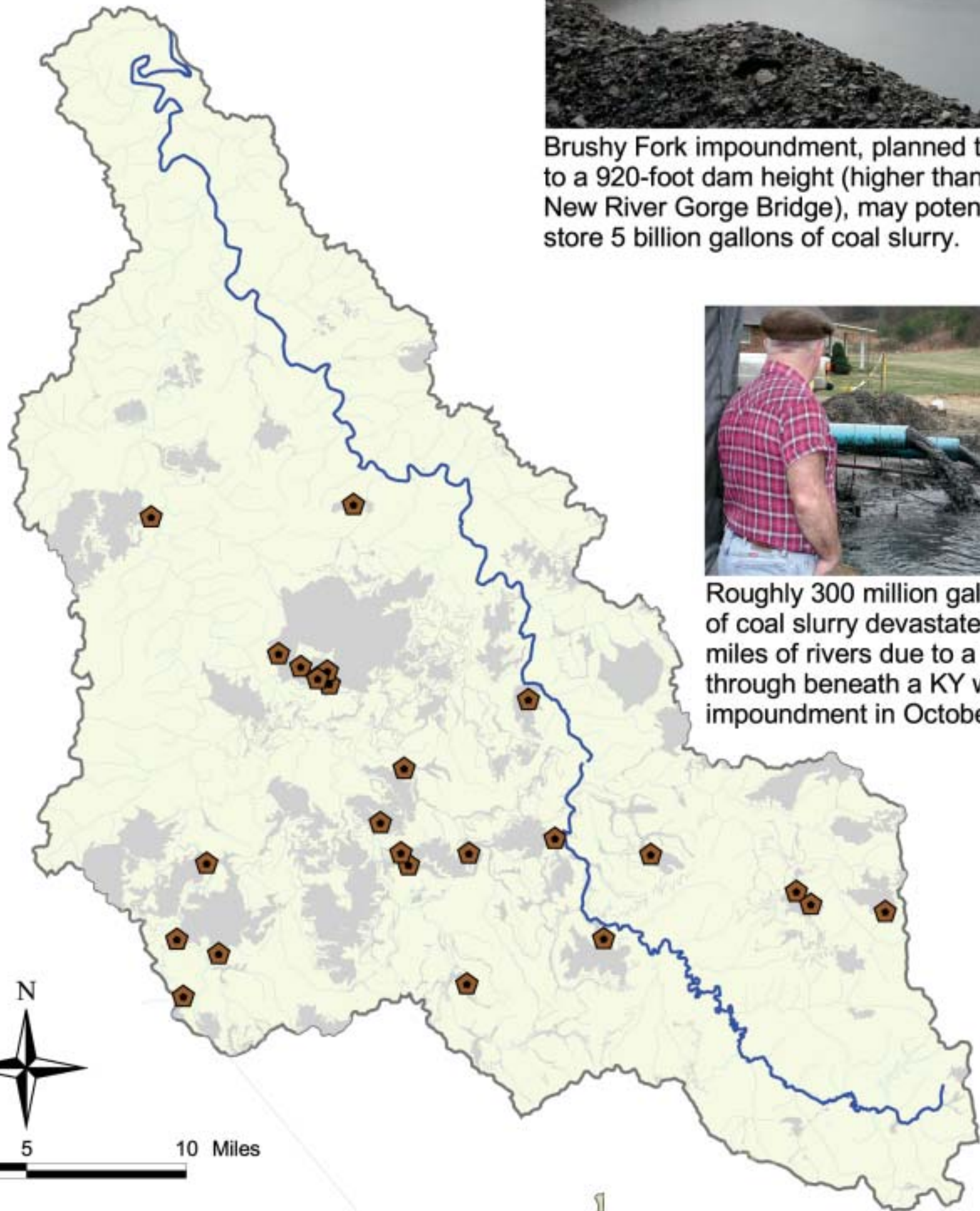
St. Albans' water supply intake lies downstream of these significant risks.



Brushy Fork impoundment, planned to grow to a 920-foot dam height (higher than the New River Gorge Bridge), may potentially store 5 billion gallons of coal slurry.



Roughly 300 million gallons of coal slurry devastated 75 miles of rivers due to a breakthrough beneath a KY waste impoundment in October 2000.



LEGEND

-  Coal Waste Impoundments
-  Coal River Streams
-  Permitted Surface Mining
-  Coal River Basin

Prepared by Robert Nutter Jr. (MU), Josh Beck, and Rick Eades for Ohio Valley Environmental Coalition. Funding provided by the Progressive Technology Project.

We gratefully acknowledge the assistance of Greg Adolphson, and Shelia Vuckovich (WVDEP), Rick Buckley (OSM), Dr. James Leonard, Jared Bledsoe, Prof. James R. Rappold (MU Geography Dept.), Chris Worth (MU), Vivian Stockman (OVEC), and Monroe Cassady.

