

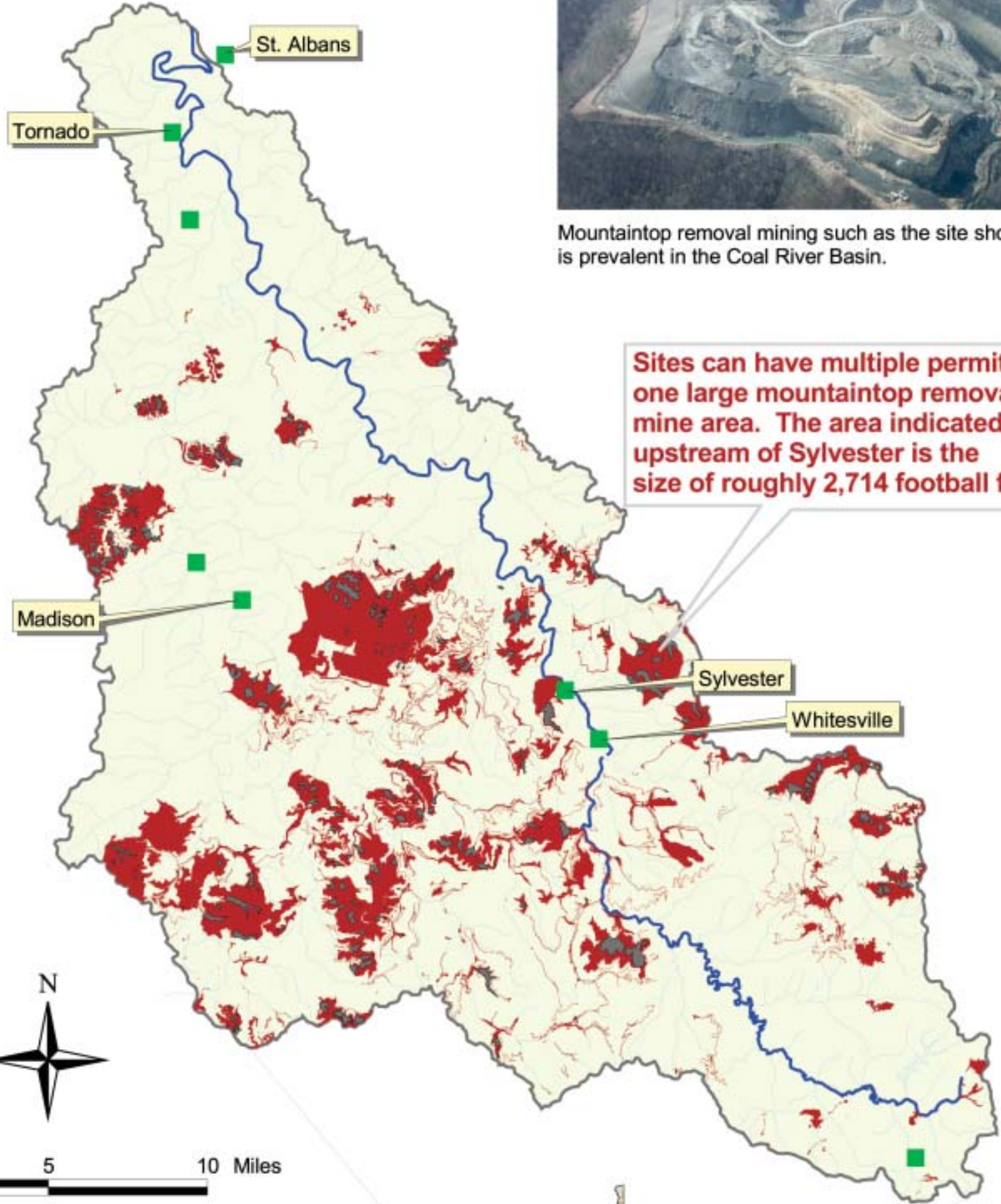
# Coal River Basin Surface Mining Permits

Permitted surface mining area in the Coal River Basin is 95,772 acres (Data Source: WVDEP 1/17/02).

The area of all surface mining permits shown in the Coal River Basin is equal to roughly 72,555 football fields.



Mountaintop removal mining such as the site shown is prevalent in the Coal River Basin.



Sites can have multiple permits for one large mountaintop removal mine area. The area indicated upstream of Sylvester is the size of roughly 2,714 football fields.



0 5 10 Miles

## LEGEND

- Municipalities
- Valley Fills
- Permitted Surface Mining
- ~ Coal River Streams
- Coal River Basin



Prepared by Robert Nutter Jr. (MU), Josh Beck, and Rick Eades for Ohio Valley Environmental Coalition. Funding provided by the Progressive Technology Project.

We gratefully acknowledge the assistance of WVDEP's TAGIS Group, Michael Shank and Larry Evans, Vivian Stockman (OVEC), and Hume Davenport.

